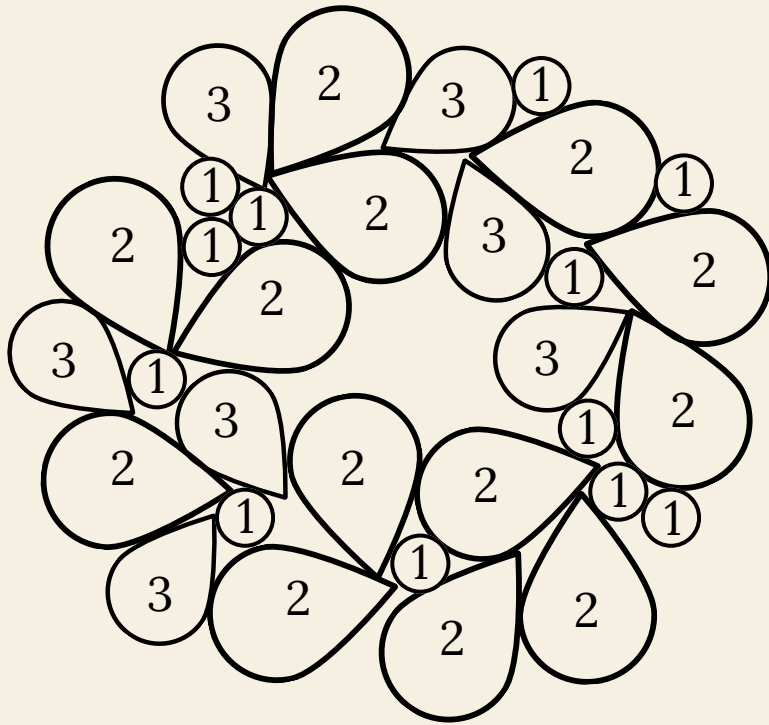
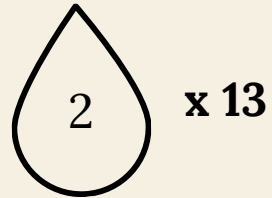


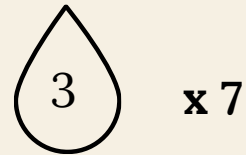
Wreath Template



① x 12

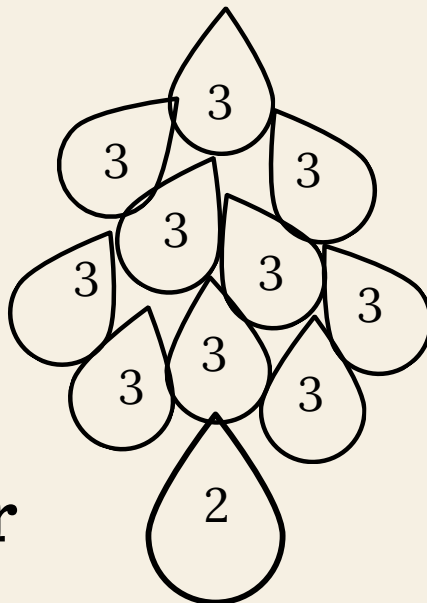


x 13

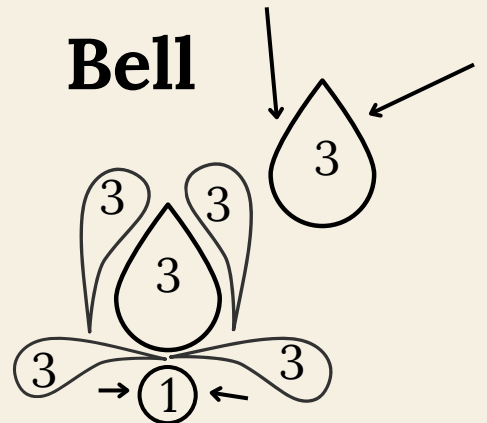


x 7

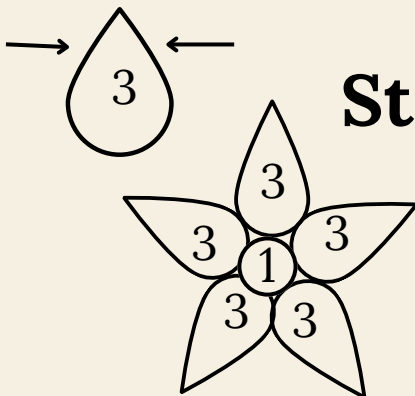
Tree



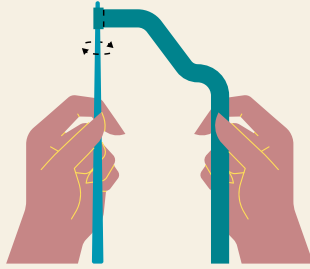
Bell



Star



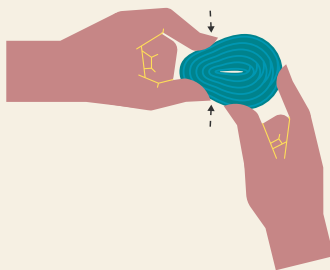
Getting Started



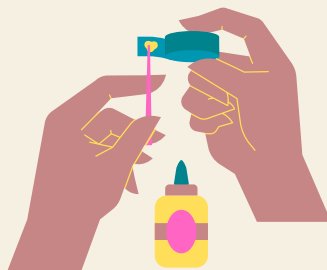
Slide one end of a paper strip into the top of the quilling tool.



Roll paper into a coil by rotating the tool. Gently slide the coil off the quilling tool



Create shapes with your hands, or by using a shape template, and gently squeeze the coil into your desired shape.



Apply a small amount of glue to the end of your coil to secure your shape.